

# LEVEL CONTROLS FOR TANKS UNDER PRESSURE (MAX16 bar)

## USE

- Suitable to control the liquid level in tanks under pressure, autoclaves, steam generators with pump and minimum level control
- Suitable for liquids with a specific gravity from approx. 0.9 to 1.2 kg/dm<sup>3</sup> and viscosity lower than 38 mm<sup>2</sup>/S.

## INSTALLATION AND OPERATION

- A41A-A41B flange for direct connection, float plunged in the tank.
- A42A female 1"BSP connection with spheroidal cast iron body protecting the float, external installation.
- Adjustable level differential

## TECHNICAL FEATURES

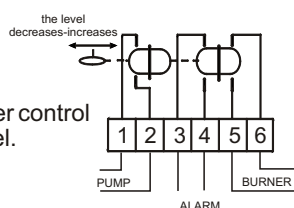
- Diecast aluminium casing.
- Spheroidal cast iron body.
- Float and internal parts in contact with liquid are in AISI 316L stainless steel.

## HOMOLOGATION AND STANDARDS

- Complies with CEI EN 60947-5-1 standards

## ELECTRICAL FEATURES

- 2 mercury bulb switches for high temperature : one switch for pump control and one for burner control and alarm signal at minimum level.

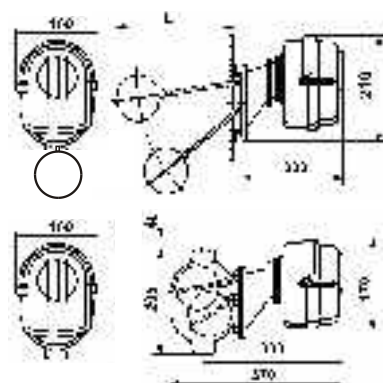


Nominal insulation tension	Ui 380V~		
Continuous duty nominal current	Ith 6A		
Operating nominal current Ie:			
	220V~	250V~	
Resistive load	AC-12	-	5 A
Inductive load	AC-15	-	2 A
Direct current	DC-13	0.2A	-



type	L
A41A	135 + 325
A41B	335 + 780

A42A



TYPE	Level differential mm	Max. working pressure bar	Max. temperature of the liquid °C	Working temperature °C	Protection	Weight each Kg	Box pcs. No
------	--------------------------	------------------------------	--------------------------------------	---------------------------	------------	-------------------	----------------

### FLANGE CONNECTION

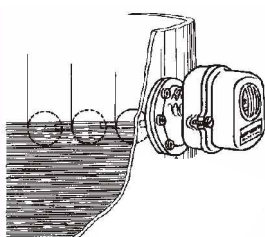
A41A	25 to 50 25 to 75	16	200	-25 to 60	IP54	5.4	
A41B	55 to 210 65 to 305 95 to 370 140 to 570	16	200	-25 to 60	IP54	5.1	

### G 1" female connection

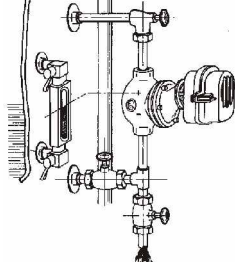
A42A	25 to 50	16	200	-25 to 60	IP54	9.3	
------	----------	----	-----	-----------	------	-----	--

### INSTALLATION EXAMPLE:

A41



A42



### DIFFERENTIAL LEVEL CONTROL WIRING CONNECTIONS REGULATION

